



BRUCE MUSEUM
One Museum Drive • Greenwich, CT 06830-7100

**Coming Full Circle:
The Greenwich Art Society Celebrates 100 at the Bruce Museum
February 11 – April 1, 2012
Bruce Museum, 1 Museum Drive, Greenwich, CT**

These images are available as high-resolution digital files (JPEG 300 dpi) for exhibition publicity only.
Contact: Cynthia Ehlinger, Bruce Museum Marketing Assistant, (203)-413-6756 or cynthiae@brucemuseum.org



1_MacRae_Tea
Elmer Livingston MacRae
(American, 1875–1953)
Tea in the Arbor, 1911
Oil on canvas
Museum purchase, 1990
Bruce Museum Collection 90.09
Photo by Paul Mutino



2_Ochtman_EarlySnow
Leonard Ochtman
(American, b. Holland, 1854–1934)
The Early Snow, 1912
Watercolor on paper
Gift of Dorothy Ochtman Del Mar, 1958
Bruce Museum Collection 20014
Photo by Paul Mutino



3_Browne_Cuban
Matilda Browne (American, 1869–1947)
Cuban Landscape, 1912
Watercolor on paper
Gift of Allen H. Barton, 1985
Bruce Museum Collection 85.10.04
Photo by Paul Mutino



4_Hassam_WaysideInnOaks
Childe Hassam
(American, 1859–1935)
Wayside Inn, 1926
Etching
Bruce Museum Collection 98.05
Photo by Paul Mutino



5_McCrea_AfterWinter
Samuel Harkness McCrea
(American, 1867–1941)
After the Winter, 1910
Opaque watercolor
Gift of the artist, 1932,
Bruce Museum Collection 18079
Photo by Paul Mutino

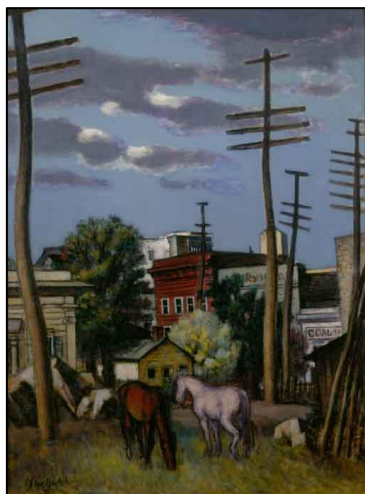


6_Volkmar_Vase
Leon Volkmar
(American, 1879–1959)
Vase, 1915
Ceramic
Gift of Mr. & Mrs. Robert Hack,
Bruce Museum Collection 2009.05
Photo by Paul Mutino

- more -

**Coming Full Circle:
The Greenwich Art Society Celebrates 100 at the Bruce Museum**
February 11 – April 1, 2012
Bruce Museum, 1 Museum Drive, Greenwich, CT

These images are available as high-resolution digital files (JPEG 300 dpi) for exhibition publicity only.
Contact: Cynthia Ehlinger, Bruce Museum Marketing Assistant, (203)-413-6756, or cynthiae@brucemuseum.org



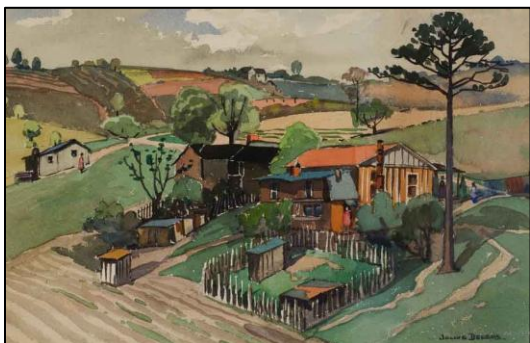
7_Simkhovitch_Morning
Simka Simkhovitch
(American, b. Russia 1893–1949)
Early Morning in Connecticut, 1940
Oil on canvas
Purchased with funds given in memory of
Eugene G. Swartz, 1996
Bruce Museum Collection
Photo by Paul Mutino



8_Ochtman_Clivia
Dorothy Ochtman
(American, 1892–1971)
Clivia
Pastel on paper
Museum purchase, 1989
Bruce Museum Collection 89.19.08
Photo by Paul Mutino



9_Kane_Kelp
Margaret Brassler Kane
(American, 1909–2002)
In the Kelp Forest, 1996
Bronze
Gift of Betty Rigg, 1996
Bruce Museum Collection
Photo by Paul Mutino



10_Delbos_Landscape
Julius Delbos (American, 1879–1970)
Untitled (Landscape)
Watercolor on board
Gift of Samuel Meek, 1964
Bruce Museum Collection 22730
Photo by Paul Mutino



11_Axleroad_Chimaera
Don Axleroad
Chimaera, 1960s
Color woodcut
Courtesy of the artist



12_Carver_Restaurant
Mary Lucia Carver
The Restaurant, 1979
Watercolor on paper
Museum purchase, 1982
Bruce Museum Collection 82.12.01
Photo by Paul Mutino

**Coming Full Circle:
The Greenwich Art Society Celebrates 100 at the Bruce Museum**

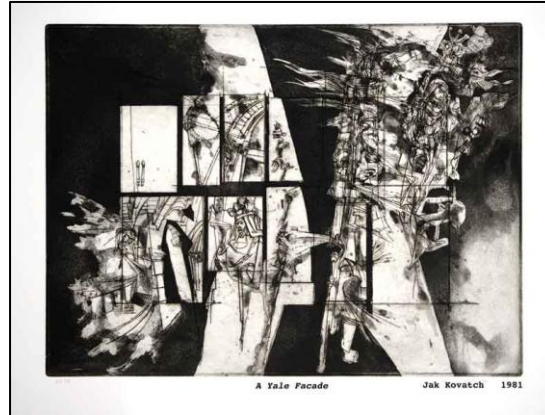
February 11 – April 1, 2012

Bruce Museum, 1 Museum Drive, Greenwich, CT

These images are available as high-resolution digital files (JPEG 300 dpi) for exhibition publicity only.
Contact: Cynthia Ehlinger, Bruce Museum Marketing Assistant, (203)-413-6756, or cynthiae@brucemuseum.org



13_Burgess_NY
Virginia Burgess
Upper and Lower New York, 1977
Oil on canvas
Collection of the artist



14_Kovach_Yale
Jak Kovatch
A Yale Façade, 1981
Etching
Courtesy of the artist



15_Merck_GreatBlue
Josephine Coy (now Merck)
Great Blue Overhead, 1984
Oil on canvas
Courtesy of Josephine Merck
Photo by Paul Mutino



16_Russo_Women
Enzo Russo (American, b. Italy)
Women of the Night, 1989–90
Oil on canvas
Courtesy of the artist
Photo by Paul Mutino



17_More_Gymnast
Douglas More
Gymnast #3
Bronze
Courtesy of the artist
Photo by Paul Mutino



18_Dixon_AfricanGarden
Carol Nipomnich Dixon
African Garden, 1997–98
Embroidery and found objects
Courtesy of the artist
Photo by Paul Mutino